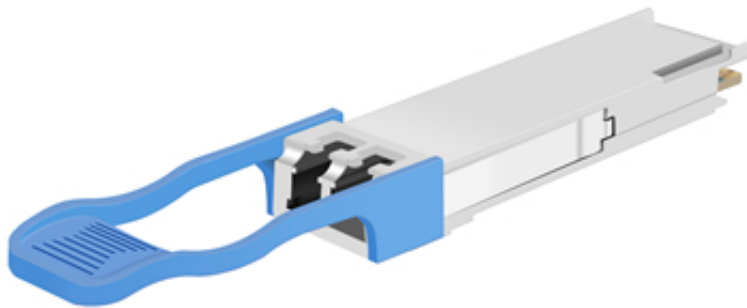


# JQ28-L100GX-DL10D

QSFP28 103.1~112Gbps LAN-WDM 1294nm~1310nm SMF 10KM  
Duplex LC Optical Transceiver



## FEATURES & BENEFITS

- Hot-Pluggable QSFP28 Footprint
- Supports upto 103.1~112Gbps Data Rates
- Single 3.3V Power Supply and Industry Low Power dissipation
- Max link lenght Up to 10KM on SMF Fiber
- Class 1 Laser Safety Compliant
- RoHS 6 compliant (lead free)
- Operating Case Temperature : 0~70 (Extended /Industrial grade optional)
- Compliant with QSFP28 MSA Specification
- Low power consumption

## Application

- Network Communication
- FTTH/FTTB/FTTx
- ISP Backhaul Networking

## OVERVIEW

JQ28-L100GX-DL10D is a MSA compliant 103.1~112Gbps QSFP28 Packaged Transceiver. It is designed, assembled, tested in the ISO certified manufacturing facilities and an ideal choice to fulfill various optical Networking applications.

## SPECIFICATIONS

P/N	JQ28-L100GX-DL10D
Form Factor	QSFP28
Standard & protocol	100GBASE LR4
Data Rate	103.1~112Gbps
WaveLength	LAN-WDM 1294nm~1310nm
Media	SMF
Reach	10KM
Interface	Duplex LC
Tx Source	LWDM DML
Rx Source	PIN
Tx Power	-4.3~+4.5dBm
Rx Power	-8.6dBm
Temp.	Tc