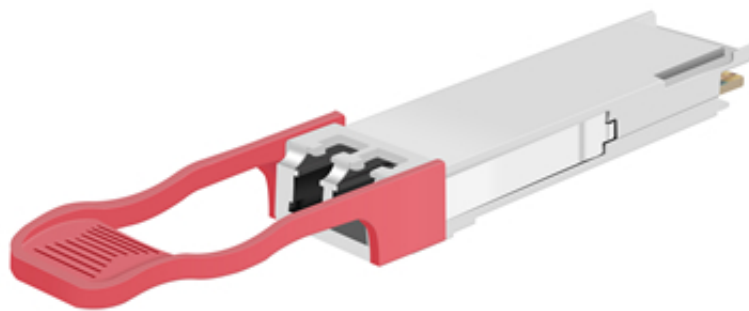


# JQP-CX40G-DL40D

QSFP+ 40Gbps CWDM 1271nm~1331nm SMF 40KM Duplex LC Optical Transceiver



## FEATURES & BENEFITS

- Hot-Pluggable QSFP+ Footprint
- Supports upto 40Gbps Data Rates
- Single 3.3V Power Supply and Industry Low Power dissipation
- Max link length Up to 40KM on SMF Fiber
- Class 1 Laser Safety Compliant
- RoHS 6 compliant (lead free)
- Operating Case Temperature : 0~70 (Extended /Industrial grade optional)
- Compliant with QSFP+ MSA Specification
- Low power consumption

## Application

- Network Communication
- FTTH/FTTB/FTTx
- ISP Backhaul Networking

## OVERVIEW

JQP-CX40G-DL40D is a MSA compliant 40Gbps QSFP+ Packaged Transceiver. It is designed, assembled, tested in the ISO certified manufacturing facilities and an ideal choice to fulfill various optical Networking applications.

## SPECIFICATIONS

P/N	JQP-CX40G-DL40D
Form Factor	QSFP+
Standard & protocol	40GBASE ER4
Data Rate	40Gbps
WaveLength	CWDM 1271nm~1331nm
Media	SMF
Reach	40KM
Interface	Duplex LC
Tx Source	DFB
Rx Source	APD
Tx Power	-2.7 +4.5dBm
Rx Power	-19dBm
Temp.	Tc/Ti