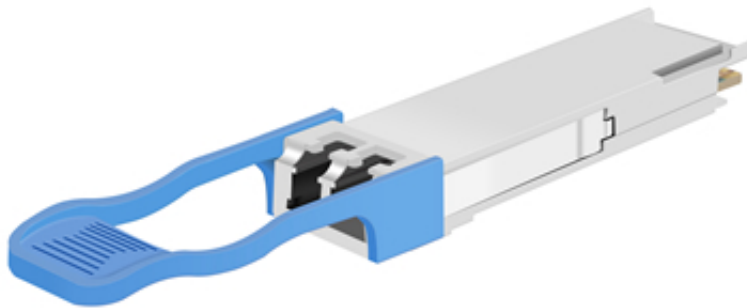


JQP-CX40G-DL10D

QSFP+ 40Gbps CWDM 1271nm~1331nm SMF 10KM Duplex LC Optical Transceiver



FEATURES & BENEFITS

- Hot-Pluggable QSFP+ Footprint
- Supports upto 40Gbps Data Rates
- Single 3.3V Power Supply and Industry Low Power dissipation
- Max link lenght Up to 10KM on SMF Fiber
- Class 1 Laser Safety Compliant
- RoHS 6 compliant (lead free)
- Operating Case Temperature : 0~70 (Extended /Industrial grade optional)
- Compliant with QSFP+ MSA Specification
- Low power consumption

Application

- Network Communication
- FTTH/FTTB/FTTx
- ISP Backhaul Networking

OVERVIEW

JQP-CX40G-DL10D is a MSA compliant 40Gbps QSFP+ Packaged Transceiver. It is designed, assembled, tested in the ISO certified manufacturing facilities and an ideal choice to fulfill various optical Networking applications.

SPECIFICATIONS

P/N	JQP-CX40G-DL10D
Form Factor	QSFP+
Standard & protocol	40GBASE LR4
Data Rate	40Gbps
WaveLength	CWDM 1271nm~1331nm
Media	SMF
Reach	10KM
Interface	Duplex LC
Tx Source	DFB
Rx Source	PIN
Tx Power	-7.0 +2.3dBm
Rx Power	-11.5dBm
Temp.	Tc/Ti