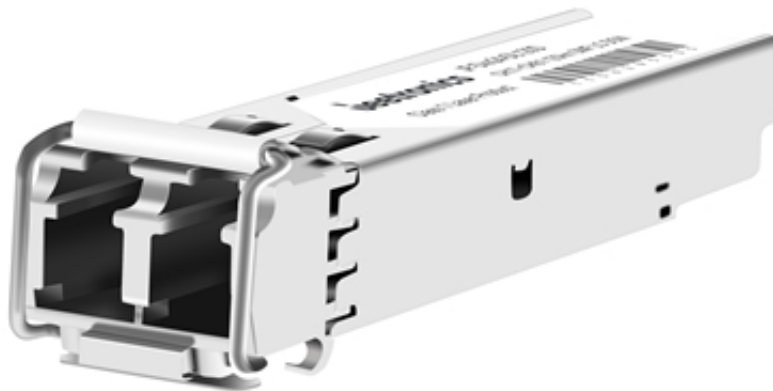


JP-Dxx24-DL120D

SFP 1.25Gbps DWDM CH17~CH61 SMF 120KM Duplex LC Optical Transceiver



FEATURES & BENEFITS

- Hot-Pluggable SFP Footprint
- Supports upto 1.25Gbps Data Rates
- Single 3.3V Power Supply and Industry Low Power dissipation
- Max link lenght Up to 120KM on SMF Fiber
- Class 1 Laser Safety Compliant
- RoHS 6 compliant (lead free)
- Operating Case Temperature : 0~70 (Extended /Industrial grade optional)
- Compliant with SFP MSA Specification
- Low power consumption

Application

- Network Communication
- FTTH/FTTB/FTTx
- ISP Backhaul Networking

OVERVIEW

JP-Dxx24-DL120D is a MSA compliant 1.25Gbps SFP Packaged Transceiver. It is designed, assembled, tested in the ISO certified manufacturing facilities and an ideal choice to fulfill various optical Networking applications.

SPECIFICATIONS

P/N	JP-Dxx24-DL120D
Form Factor	SFP
Standard & protocol	1000BASE DWDM
Data Rate	1.25Gbps
WaveLength	DWDM CH17~CH61
Media	SMF
Reach	120KM
Interface	Duplex LC
Tx Source	DFB
Rx Source	APD
Tx Power	0~+5dBm
Rx Power	-32dBm
Temp.	Tc/Ti