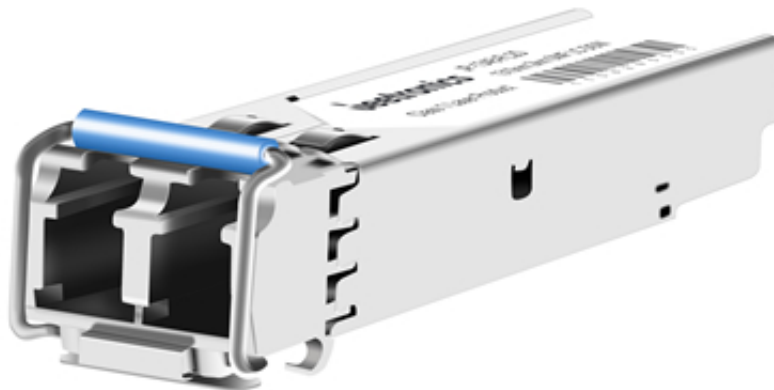


# JP-1348-FL2D

SFP 2.5Gbps 1310nm SMF 2KM Duplex LC Optical Transceiver



## FEATURES & BENEFITS

- Hot-Pluggable SFP Footprint
- Supports upto 2.5Gbps Data Rates
- Single 3.3V Power Supply and Industry Low Power dissipation
- Max link lenght Up to 2KM on SMF Fiber
- Class 1 Laser Safety Compliant
- RoHS 6 compliant (lead free)
- Operating Case Temperature : 0~70 (Extended /Industrial grade optional)
- Compliant with SFP MSA Specification
- Low power consumption

## Application

- Network Communication

- FTTH/FTTB/FTTx
- ISP Backhaul Networking

## OVERVIEW

JP-1348-FL2D is a MSA compliant 2.5Gbps SFP Packaged Transceiver. It is designed, assembled, tested in the ISO certified manufacturing facilities and an ideal choice to fulfill various optical Networking applications.

## SPECIFICATIONS

P/N	JP-1348-FL2D
Form Factor	SFP
Standard & protocol	2.5GBASE LR
Data Rate	2.5Gbps
WaveLength	1310nm
Media	SMF
Reach	2KM
Interface	Duplex LC
Tx Source	FP
Rx Source	PIN
Tx Power	-10 -3dBm
Rx Power	-18dBm
Temp.	Tc/Ti