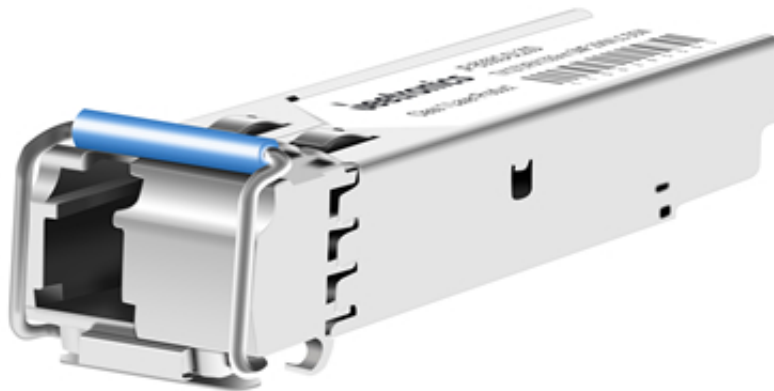


JP-B356G-DL20D

SFP 6.144Gbps TX1270/RX1330nm SMF 20KM Simplex LC Optical Transceiver



FEATURES & BENEFITS

- Hot-Pluggable SFP Footprint
- Supports upto 6.144Gbps Data Rates
- Single 3.3V Power Supply and Industry Low Power dissipation
- Max link length Up to 20KM on SMF Fiber
- Class 1 Laser Safety Compliant
- RoHS 6 compliant (lead free)
- Operating Case Temperature : 0~70 (Extended /Industrial grade optional)
- Compliant with SFP MSA Specification
- Low power consumption

Application

- Network Communication
- FTTH/FTTB/FTTx
- ISP Backhaul Networking

OVERVIEW

JP-B356G-DL20D is a MSA compliant 6.144Gbps SFP Packaged Transceiver. It is designed, assembled, tested in the ISO certified manufacturing facilities and an ideal choice to fulfill various optical Networking applications.

SPECIFICATIONS

P/N	JP-B356G-DL20D
Form Factor	SFP
Standard & protocol	6GBASE BX
Data Rate	6.144Gbps
WaveLength	TX1270/RX1330nm
Media	SMF
Reach	20KM
Interface	Simplex LC
Tx Source	DFB
Rx Source	PIN
Tx Power	-2 +3dBm
Rx Power	-14.5dBm
Temp.	Tc/Ti