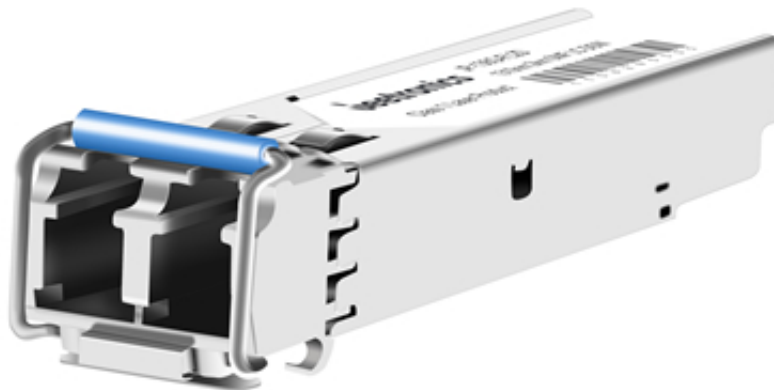


JP-136G-FL2D

SFP 6.144Gbps 1310nm SMF 2KM Duplex LC Optical Transceiver



FEATURES & BENEFITS

- Hot-Pluggable SFP Footprint
- Supports upto 6.144Gbps Data Rates
- Single 3.3V Power Supply and Industry Low Power dissipation
- Max link lenght Up to 2KM on SMF Fiber
- Class 1 Laser Safety Compliant
- RoHS 6 compliant (lead free)
- Operating Case Temperature : 0~70 (Extended /Industrial grade optional)
- Compliant with SFP MSA Specification
- Low power consumption

Application

- Network Communication

- FTTH/FTTB/FTTx
- ISP Backhaul Networking

OVERVIEW

JP-136G-FL2D is a MSA compliant 6.144Gbps SFP Packaged Transceiver. It is designed, assembled, tested in the ISO certified manufacturing facilities and an ideal choice to fulfill various optical Networking applications.

SPECIFICATIONS

P/N	JP-136G-FL2D
Form Factor	SFP
Standard & protocol	6GBASE LR
Data Rate	6.144Gbps
WaveLength	1310nm
Media	SMF
Reach	2KM
Interface	Duplex LC
Tx Source	FP
Rx Source	PIN
Tx Power	-8.0dBm
Rx Power	-14dBm
Temp.	Tc/Ti