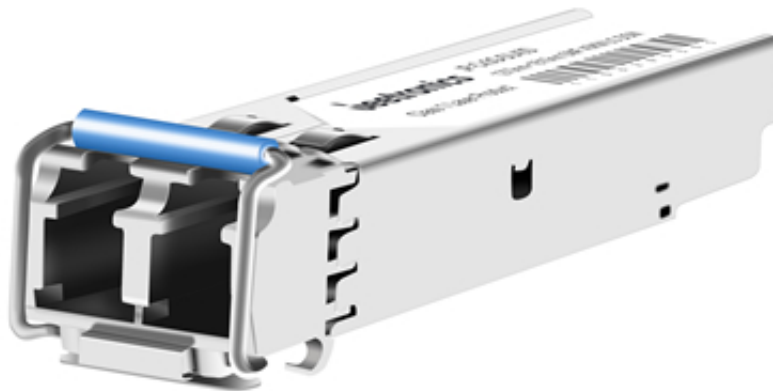


JP-Cx3G-DL40D

SFP 3.072Gbps CWDM 1270nm~1610nm SMF 40KM Duplex LC Optical Transceiver



FEATURES & BENEFITS

- Hot-Pluggable SFP Footprint
- Supports upto 3.072Gbps Data Rates
- Single 3.3V Power Supply and Industry Low Power dissipation
- Max link lenght Up to 40KM on SMF Fiber
- Class 1 Laser Safety Compliant
- RoHS 6 compliant (lead free)
- Operating Case Temperature : 0~70 (Extended /Industrial grade optional)
- Compliant with SFP MSA Specification
- Low power consumption

Application

- Network Communication
- FTTH/FTTB/FTTx
- ISP Backhaul Networking

OVERVIEW

JP-Cx3G-DL40D is a MSA compliant 3.072Gbps SFP Packaged Transceiver. It is designed, assembled, tested in the ISO certified manufacturing facilities and an ideal choice to fulfill various optical Networking applications.

SPECIFICATIONS

P/N	JP-Cx3G-DL40D
Form Factor	SFP
Standard & protocol	3GBASE CWDM
Data Rate	3.072Gbps
WaveLength	CWDM 1270nm~1610nm
Media	SMF
Reach	40KM
Interface	Duplex LC
Tx Source	DFB
Rx Source	PIN
Tx Power	-2 +3dBm
Rx Power	-16dBm
Temp.	Tc/Ti